



## International Learner Information

Parnell District School is an inclusive, multicultural Central Auckland school offering high quality learning for students ages 5 – 13 years of age. Parnell District admits a strictly limited number of international students each year. For specific information on enrolling, email [enrolment@parnell.school.nz](mailto:enrolment@parnell.school.nz) and talk to our enrolment officer about enrolment requirements and possibilities to study with us.





## About us

### Our Vision

*Growing Great Humans, fit for the future*

### Our Values

*Kaitiakitanga  
Innovation  
Truth*

#### *A school for Growing Great Humans*

Parnell District School is one of Auckland's oldest schools and sits on a beautiful promontory with sweeping views across the city. Ringed in ancient trees and preserving its traditional buildings and volcanic rock walls it's a very special setting for growing great humans.

Our classrooms are set up to be inspiring laboratories for learning where our students get engaged, and work together to develop the skills and understandings that set them up for success in and out of school, and for their future.

We bring our values to life every day

**Kaitiakitanga** - Protecting the world and caring for people

**Innovation** - Being progressive with open, creative minds

**Truth** - Being honest and always ourselves. Acting with integrity



#### *What is 'a great human fit for the future'? Three things:*

A critical thinker educated for life - Our students learn to understand and critique the world around them, and make good decisions

Protective of the world and caring of people - They care for the planet and everything in it; and they care for people, whatever their backgrounds or beliefs

Responsible, resilient and self-reckoning - They have strength of character. They own their mistakes, grow from setbacks and always remain curious, open-minded, impassioned and kind



**Growing Great Humans**



## Learning At Parnell District School

The focus at Parnell District School is on the learning relationship between the learner and their teacher. We invest to maintain low class sizes, enabling our teachers to deliberately plan a programme of learning alongside each learner.

In our classrooms, you will see highly enabled students working independently and with their teachers to develop skills and knowledge that are important to them. Each term the children will engage in an inquiry that has been developed by our student leaders alongside our phenomenal teaching staff. Inquiries will focus students learning around scientific thinking, exploration thinking, or using the design thinking process to solve real problems. From this context, real life applications of literacy and math are taught to students. Over a two-year learning programme all children will develop their knowledge and understanding of the entire New Zealand Curriculum.

Children for whom English is not their first language or with additional language learning needs are supported by our English as a Second or Other Language (ESOL) department. Children receive in class support and withdrawal group support as appropriate to support their English language development.

Data analysed from standardised testing and student progress show that children at Parnell District School outperform New Zealand achievement trends. Our testing shows significant acceleration for students through our targeted approach to teaching.

Parents are informed about student progress in writing four times a year. In terms one and three, reporting focuses on children's achievement across the curriculum and their work habits. In term two and four reporting focuses on achievement and progress in Reading, Writing and Math using the New Zealand Curriculum progress tools.



## Supporting International Learners

Parnell District School is proud to be a signatory to the Code Of Practice for the pastoral care of international learners. We value our international community and work to ensure all students are supported while studying with us. You can access an English Language copy of the Code Of Practice [here](#).

To view the Parnell District School Policies relating to international learners, [click here](#) to view our policies online, including our fee protection policy and termination and withdrawal of international learners.

Username: Parnell

Password: parnelldistrict



### *Immigration Information*

Full details of visa and permit requirements, advice on rights to employment in New Zealand while studying, and reporting requirements are available through the New Zealand Immigration Service, and can be viewed on their website at <http://www.immigration.govt.nz>

### *Health and Travel Insurance*

Most students are not entitled to publicly funded health services while in New Zealand unless they are:

- A resident or citizen of Australia; or
- A national of the United Kingdom in New Zealand; or
- The holder of a temporary permit that is valid for two years or more.

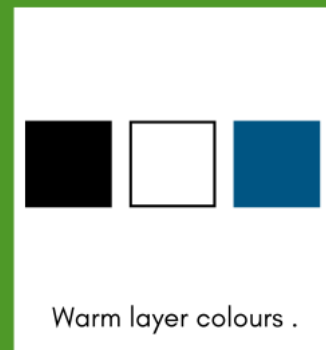
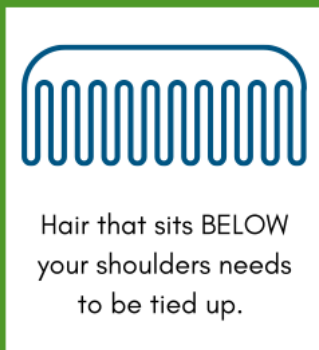
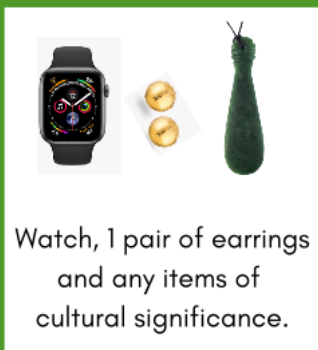
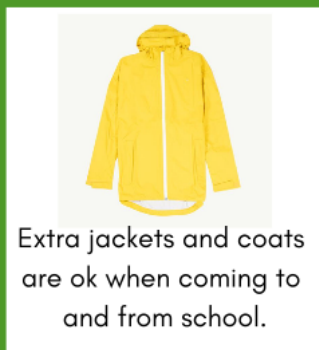
If you do not belong to one of these special categories and you receive medical treatment during your visit, you will be liable for the full costs of that treatment. We strongly recommend that you have insurance that will cover the cost of medical treatment in New Zealand for the duration of your stay in New Zealand. We also strongly recommend that you obtain insurance to cover your travel to and from New Zealand.

Unicare Travel and Medical Insurance can be recommended as suitable. Details can be provided on request.



# PDS UNIFORM

## COOL FOR SCHOOL



## NOT COOL FOR SCHOOL

