



**PARNELL**  
DISTRICT SCHOOL

## Newsletter 2: 22<sup>nd</sup> February 2023

Kia ora e te whānau,

Our students have shown amazing focus and resilience in what has been a disrupted start to our year. This week we start our main inquiry for term 1, Legacy. Our inquiry into Legacy is all about looking at the 150-year history of Parnell District School. Our 150<sup>th</sup> birthday on the 1<sup>st</sup> of May is a significant milestone for any school, and as one of the first eight schools in Auckland, a milestone very few have made.

You'll be hearing a lot about 150<sup>th</sup> celebrations over 2023, and some of the projects planned are detailed later in the newsletter. The first job for our children is to help us by designing a logo for our 150<sup>th</sup> birthday. Whānau may want to help with the design, and that's great, but this should be predominately children's work and children's ideas, please. When you have a design to submit, email it to [principal@parnell.school.nz](mailto:principal@parnell.school.nz), or drop off paper submissions to the office.

Thank you to all our families who have paid or started contributing to their school donations. We are aware that there are many pressures on families in the current environment, and we are not unaware of the effort many of our families go to in order to contribute to our donation. The funding our school receives from the Ministry of Education is significantly less than other schools in Auckland because of the expectation that our community raise funds to support the school, and for this reason, we do rely on the contributions of our whānau. For 2023 your donation helps us maintain our small classes, allows us to retain our in-school counsellor, and provides additional programmes for our students.

### Every minute matters at school

You might have heard some chatter in the media about the importance of children being at school every day and the low attendance rates at some schools. School closures over the last few weeks have shown us how much our children want to be at school and reminded us how much our teachers want to be here with them. Parnell District School are proud of our children's great attendance and our family's commitment to having our children at school every day. I do want to encourage families to aim for 8:30 arrival at school to give all our children the best chance to prepare themselves for learning before school starts at 8:55. We have increasing numbers of children arriving late, which means children arrive without time to prepare before learning starts and miss much of the important information they need for the day ahead.

### Indoor adventure OE

For any of our skiers or adventurers, you may have heard about the Outdoor adventure OE. Snow planet's closure for renovation has meant our usual ski opportunity this year has some additional opportunities for trampoline fun and rock climbing. Information about the programme and sign-up info is attached to the newsletter separately.

## Important Dates: Term One

Term One: 31<sup>st</sup> January - 6<sup>th</sup> April, No school dates: 17<sup>th</sup> March (Teacher only day)

24/2	Assembly: Room 28
27/2	Week 5
3/3	Assembly: Room 26, Year 5-8 swimming trials
6/3	Week 6
10/3	Assembly: Room 12
13/3	Week 7
16/3	EZ Swimming
17/3	Teacher-only day (C4 open), BS Swimming
20/3	Week 8
22/3	Fundraising team meeting, Aotea bake sale
24/3	Assembly: Room 16, New parent breakfast
27/3	Week 9
29/3	Priority learner meetings
31/3	Assembly: Enviro, Term 1 reports
3/4	Week 10
6/4	Aotea Assembly, term one ends
7/4	Good Friday



## 150<sup>th</sup> Celebrations - be a part of it!

Thank you so much to those Whānau and Friends who have offered to help with the three major fundraising initiatives this year in celebration of the school's 150<sup>th</sup> anniversary.

### Saturday 6 May – School Fete:

We're planning a Fete (also known as a fair or festival) for our wider Whānau and Friends to enjoy. Lock it in the diary.

### Saturday 2 September - Gala Dinner:

This will be a night to remember for past and present PDS Whānau and Friends (adults only). To be held in Term 3 (date TBC).

### Cookbook:

A culmination of PDS Whānau and Friends recipes, representing our communities' diverse cultures and global delicacies. Term 4.

## We need you!

Many hands make light work! We're aiming to generate \$200,000 this year from these three initiatives. This will be used to support our children's education at PDS through improvements to additional staffing, resources for our classrooms, and maintain our excellent play spaces.

**We do need more hands-on deck and, in particular, the below areas.**

If you or your wider networks are available to contribute and/or lead/support any of the below, then we'd love to hear from you. Please email [office@parnell.school.nz](mailto:office@parnell.school.nz). Alternatively, you can speak to one of our Whānau and Friends committee volunteers (formerly known as the PTA). Yes, we've rebranded to something a little more modern-day!

Our kickoff meeting is **Thursday 2 March, 6 pm in the staffroom** where you can come along and learn more. Wine will be supplied to get the ideas flowing!

### Fete

- Entertainment: do you have connections with musicians/bands that might be suitable to entertain Fete goers? Are you keen to organise games/source entertainment providers?
- Food: do you have food truck recommendations / want to lead the food organisation for the fete?
- Ticket Sales/Advertising: are you keen to help promote the event and manage ticket sales?
- Photographer: This will be an event that marks history. Would you like to capture it?

### Gala Dinner

- Entertainment: can you recommend a band that will get people on the dance floor and keep them there?!
- Auction items and sponsorship: can you or your networks provide any auction items? Or would you like to get your name out there as a sponsor?
- Catering: Do you love food and would like to lead the F&B organisation?
- Photographer: This too will be an event that marks history and needs to be documented. Are you/your networks an avid photographer and willing to capture this moment for the school?
- Designer: If you have the capacity to help with the design of the tickets, advertising material and event signage, we'd love to hear from you
- Event set up/design: We need your creativity to create an engaging space for the night that encapsulates the history of the school and creates photo-worthy moments
- MC: Do you know an MC that would make our school proud? Maybe one that has an affiliation with PDS in some way?

### Cookbook

- Food photographer: Are you or your connections an expert here?
- Recipe Contributor: Can you or your Whānau and Friends provide a recipe to feature in the book?
- Printing partner: Do you know of a printing business that might be willing to subsidise the print cost to aid fundraising potential for PDS?

# PDS Whanau & Friends - News

To incorporate the PTA Class Reps and make way for any other members of our community who want to support our fundraising efforts, we've decided this year to rebrand as one group: *PDS Whanau & Friends*.

Thank you so much to everyone who gave a gold coin donation for this week's Non-Uniform Day. We hope the children had lots of fun!

Unfortunately, with all the stop-start at the beginning of term, Pizza Day didn't eventuate, but we look forward to bringing it back in Term 2.

## Upcoming events in Term 1

Our next **PDS Whanau & Friends meeting** is on **2 March at 6 pm** in the Staff Room (above the office) with a specific focus on the 150<sup>th</sup> Anniversary celebrations. Please come along, join in the discussions, volunteer your time and ideas, and make new friends, while enjoying a drink and some nibbles. **Everyone welcome!**

Term 1's **Bake Sale** will be on **Wednesday, 22<sup>nd</sup> March**. Aotea to bake. All baking sold for \$2.

Every Friday, we also run a Friday Café that sells various yummy ice creams and ice blocks. If you were free to jump on the roster to help us from 2:45-3:30 pm, then we would also love to hear from you.

If you would like to volunteer in any way, please email [pta@parnell.school.nz](mailto:pta@parnell.school.nz) or speak to Amy at the office.

## Preserves and Chutney stand

Due to the terrible weather Auckland has recently experienced, many of our usual stalls are struggling to source material for their making! The hardest hit is the Preserves and Chutney stand with backyard fruit and veg in short supply.

**Can you help out?** Do you have a fruit tree with excess produce? An olive tree about to drop all its bounty? An excess of tomatoes in your vegie patch? ALL contributions taken and pickers are available to come to collect. Please contact Amy at the [office@parnell.school.nz](mailto:office@parnell.school.nz)

# PDS UNIFORM

COOL FOR SCHOOL



Closed shoes for the STEAM and TECH room.



Term 1 and 4 and sunny days.



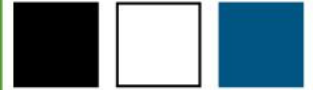
Extra jackets and coats are ok when coming to and from school.



Watch, 1 pair of earrings and any items of cultural significance.

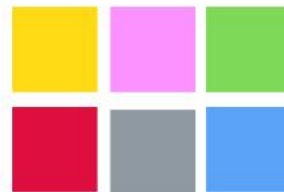


Hair that sits BELOW your shoulders needs to be tied up.



Warm layer colours .

NOT COOL FOR SCHOOL



Warm layer colours.



## Start-of-year reminders

We want to make sure our community are clear about our school's expectations so that we can avoid difficulties for students and families later in the year. While there should be no new information below, we'd suggest you talk through this information with your child, so they know all relevant expectations

## School hours

No children should be on site before 8:30 am, or after school after 3:15 pm. Some children may be on site with their parents supervising them, but for the safety of our community, no unsupervised children should be on site before or after school. The school is unable to supervise children before 8:30 am as teachers prepare for learning or after 3:15 pm. If your child is regularly on site before or after school unsupervised, they will be sent to C4, and charges will apply.

Bells indicate our learning times, with the first block starting at 8:55 am. Our break times are:

Morning tea: 10:40 am eating time, 10:50 - 11:10 am playtime

Lunch: 12:40 pm eating time, 12:50 - 1:30 pm playtime.

The school day ends at 3:00 pm

## Hats

Hats are mandatory for all children in terms one and four. Your child needs a blue hat, without branding or patterns on it, with a brim that goes right around the hat to be able to play outdoors and take part in outdoor learning opportunities.

We now have a selection of small, medium and large **new hats** available at the office for \$15.50 each.

Alternatively, you can get a hat from the [uniform shop](#), or anywhere that sells unbranded blue bucket hats.

If your child doesn't have a hat, or isn't wearing it at break time, they will be instructed to sit in the shade. No caps, no pictures, no branding.

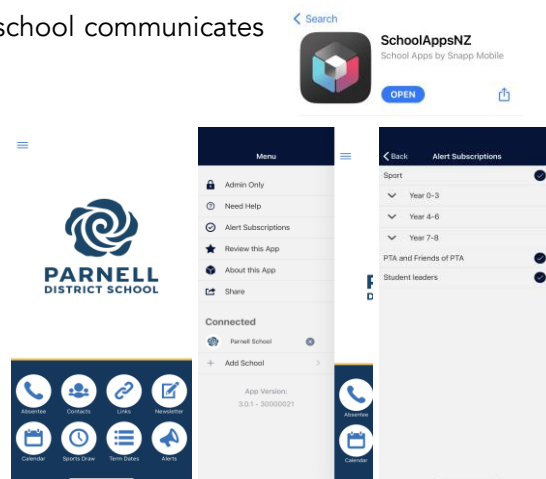


## School App

Sign up for the school app. It is often the timeliest way the school communicates with whānau, and shares information.

When looking for the app in the app store, look for [SchoolAppsNZ](#), and then add Parnell School. Remember to choose the year group and room number that applies to your children.

For our whānau who have signed up in the past, check your subscriptions are correct for the year level and room number to make sure you don't miss any information.



# Eliette's Music Academy

**PLAYING BASED MUSIC ACADEMY**

**INSPIRING CONFIDENCE & CREATIVITY THROUGH MUSIC**



**LESSONS FOR ALL AGES**

**REGISTER NOW  
FOR TERM 1**

**LEVEL 2, 181 KHYBER PASS ROAD, CRAFTON**

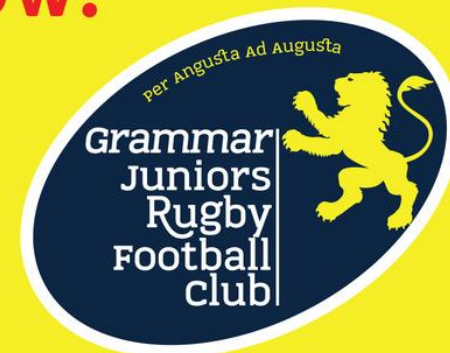
**0212296767**

**CRAFTON@ELIETTESMUSICACADEMY.COM**

**WWW.ELIETTESMUSICACADEMY.COM**

**Register Now!**

**GIRLS  
& BOYS  
RUGBY**



**grammarjuniors.co.nz**

**Age 4-13 years registrations now open!**

Rugby is great for developing fitness, team play and ball skills... and Grammar Juniors is one of the leading junior rugby clubs in the central Auckland area. Situated at Shore Road Reserve, we are fortunate to have some of the best fields in Auckland as our home grounds.

Grammar Juniors has a very proactive committee of parents, great coaches and our teams perform well in the competitions within their grades.

Grammar Juniors offers Rugby for girls and boys aged 4-13 years and Ripa (non tackle) rugby for girls and boys aged 4-11 years.



Register online: [grammarjuniors.co.nz](http://grammarjuniors.co.nz)

Or for more information email: [grammarjuniorsrugby@gmail.com](mailto:grammarjuniorsrugby@gmail.com)

**BAYLEYS**

**WINGER**

Thanks to our friends at [redfiredesign.co.nz](http://redfiredesign.co.nz)