



Newsletter 3: 6 March 2024

Kia ora e te whānau,

As we work our way into the heart of the first term, it is important we remember our start of the day routines. The school grounds are open to students from 8:30 in the morning and we encourage students to arrive between 8:30 and 8:45 to ensure they have time to prepare themselves for the day. Before school we set our day up for success, from ensuring our resources are in the right place, getting our equipment ready and checking in with our friends, being on time for school ensures that when the bell rings, "I am ready for learning".

When students are late the effects ripple through their day. Missing morning notices, not knowing what's coming up in the day and not having their equipment ready, the effects are significant. We urge you to make being on time part of your daily routine helping your child make the most of every learning minute at Parnell District School.

Wheels Wednesday

Wheels Wednesday is a day each week (weather dependent) where our students can bring their bikes, scooters, rollerblades, roller-skates and skateboards to school and enjoy riding them during break time. **Years 0-3** enjoy their time at **morning tea play** while our **years 4-8** enjoy their time during **lunch play**.

Our senior students have done a great job at setting up a safe space on the courts for your children to ride. Wheels day will occur every Wednesday, so remember your wheels and your **helmet (no helmet, no riding!)** so you can have fun with your friends.



Make sure you are signed up for notifications on the Parnell District School App (especially Tuesday evenings and Wednesday mornings) for information about Wheels Wednesday and many other school events.



Keeping Ourselves Safe

Next week, all teachers will start delivering this important Health unit to their classes. This unit has been developed by the New Zealand Police. We have attached a separate letter with this Newsletter that outlines the key themes and outcomes of this unit. We hope that all children take part in these lessons, however you can opt your child out if you wish. Please read the letter to find out more.

Weekly Basketball and Netball Teams

Term Two will see our after-school basketball and netball tournaments commence. These are being held at the Auckland Netball centre in St Johns (Netball Years 1-8) and Saint Kents Boys School on Shore Road (Basketball Years 3-8 ONLY). This is a major commitment for all involved, with games being played weekly throughout Term Two. We ask that you ensure you can commit fully to this team before indicating your interest on the forms below. This commitment also has a cost attached to it so please read the form thoroughly.

All teams will require two parent helpers (one coach and one manager) to organise training and general communication with players and families. Teams, coaches, and managers will be notified once forms are completed, and all responses have been collated. We ask please that you complete the form by **Sunday 10th March**.



[Netball Form](#)



[Basketball Form](#)

Magazines Wanted for STEAM

STEAM needs magazines! If you have any magazines at home that you no longer have use for, please deliver them to Room 19 (Mrs. Mann's room) before or after school. Thank you in advance!

Reminder: Mobile Phones at School

You will be aware that children at Parnell District School are not to use mobile phones during the day. As we notice more children bringing phones to use before and after school, we want to help you keep them safe. We know leaving phones in our bags during the day is a risky thing to do, so we want to make sure your phone is safe and meets our new Government direction about mobile phones in school. If you have a mobile phone, your teacher will collect it in the morning and send it to the office for safe storage. Mobile phones will be locked away during the day and returned at home time. Any students using their mobile phone during the day (including break times), the phone will be safely stored at the office until collected by a parent or caregiver.

Important Dates: Term One 2024

Term One: 30th January - 12th April

'No School' dates: 29th March - 2nd April (Easter public holidays)

8/3	<i>Assembly: Room 27</i>
11/3	Week 7
13/3	<i>Whānau & Friends Fundraising Team Meeting 6pm Staff Room</i> <i>Eastern Zones Swimming</i>
15/3	<i>New Parent Breakfast, Assembly: Room 26</i> <i>Bay Suburbs Swimming,</i>
18/3	Week 8
20/3	<i>Aotea Bake Sale - bring \$2</i>
22/3	<i>Assembly: Room 11 to host</i>
25/3	Week 9
29/3	<i>Good Friday - No School</i>
1/4	<i>Easter Monday - No School</i>
2/4	<i>No School</i>
3/4	Week 10
5/4	<i>Assembly: Room 4 to host; reports to go home</i>
8/4	Week 11
10/4	<i>Burger Day with Burgerfuel - Order via myKindo app by Monday 8th April 4pm</i>
12/4	<i>Assembly: Aotea Waka to Host, Term 1 Ends</i>

Weetbix Kids TRYathlon – 24 March

The Weetbix Tryathlon is open for registration. You can register your children online [here](#) and select Parnell School. Then, on the day of the TRYathlon, look out for our gazebo where we can be together and support our children.



Mystery Bags

Our Year 0-1 students had fun this week, exploring different textures and materials through the mystery bag challenge.



Safety at the School Gate



Park safely outside schools

Before and after school is a busy time for everyone. Parking rules help protect our children and keep them safe. Drivers who park illegally put our kids at risk.

This term parking officers will be on patrol outside your school to issue tickets to those who are illegally parked.

Fines for illegal parking include:

- | | |
|--|------|
| • Parked on the footpath | \$40 |
| • Parked across or within 1m of a vehicle entrance | \$40 |
| • Parked within 6m either side of an unmarked bus stop | \$40 |
| • Parked within a marked bus stop | \$60 |
| • Parked within 0.5m of a fire hydrant with no one in the car legally capable of moving it | \$60 |
| • Parked within a designated bus lane, transit or cycle lane | \$60 |
| • Parked on a clearway | \$60 |
| • Double parked | \$60 |
| • Inconsiderate parking to other road users, including pedestrians | \$60 |
| • Parked on or within 6m of an intersection | \$60 |
| • Parked on a pedestrian crossing | \$60 |
| • Parked on a broken yellow line | \$60 |

These parking offences are detailed in the New Zealand Road Code.

Thank you for your cooperation.

For more information visit
aucklandtransport.govt.nz



PDS Whānau & Friends

Whānau & Friends Meeting -

Wednesday 13 March 6pm, Staff Room

Everyone is welcome at the first Whānau & Friends meeting of the year (previously known as the Parent Teacher Association - PTA). To make our fundraising a success this year we need parents and caregivers who are willing to give their time to coordinating, organising, or helping at any of our events. Come along to share your ideas, sign-up to volunteer your time, and meet with our other amazing PDS whānau.



Friday Cafe

Every Friday on the courts from 3pm. Bring a few gold coins for an ice block and enjoy the sunshine making new friends. Prices from \$1-4.



Bake Sale - Wednesday 20 March

Aotea will be the first waka to start off our baking challenge for this year. More details to follow.



Parent Reps

Thank you to everyone who has signed up to be a Parent Rep. If you want to know who your Rep is you are welcome to ask your teacher but also expect an email introduction from your Parent Rep within the next week or so. If you are a Parent Rep, please join us for our first meeting **Wednesday 13 March 6pm in the staff room**.

Cookbooks still available for purchase!

We still have our amazing cookbook for sale celebrating 150 years! You can purchase one (or more) from the office for \$35.



Sign-up to volunteer 2024



If you would like to volunteer in any way, please complete our new online volunteer form at <https://bit.ly/pds-waf> or use this QR code for a direct link. You can also email us directly at pta@parnell.school.nz or speak to Amy in the office. We look forward to welcoming new volunteers at our Whānau & Friends Meeting on Wednesday 13 March.

Community Notices

FOOD TRUCK COLLECTIVE®

FOOD TRUCK NIGHTS

HOLY TRINITY
CATHEDRAL, PARNELL



THUR 07 MAR

**POP UP BAR & ENTERTAINMENT
5 - 9 PM**



BROUGHT TO YOU BY:

Orākei Local Board
Auckland Council

AKARANA MARINE SPORTS
DARTFORTH TRUST



SPLASH LANDING

**16-17 MARCH
11AM-6PM**



Entertainment
Education
Water Sports
Food, Drink &
Market Stalls
Kids Activities

TAMAKI DRIVE

MOANA AUCKLAND

AKARANA.CO.NZ/SPLASHLANDING



PLAY FESTIVAL

SATURDAY 6 APRIL, 11am-4pm
Tuna Mau/Western Park, Freemans Bay



Waitematā Local Board
Auckland Council

WORLD OF Cultures
21 March - 14 April 2024

FOUNDATION NORTH
Pūtea Hōpua Oranga
Funding to Enhance Lives

PLAY FULLY

CONSCIOUS KIDS
Little Seeds for a Better Future

Celebrating 150 years

open day

OF FIREFIGHTING IN TĀMAKI MAKĀURAU AUCKLAND



SUNDAY
17TH MARCH

10am - 3pm

THE CLOUD
QUEENS WHARF

- Help celebrate the evolution of firefighting in Tāmaki Makaurau
- Meet the firefighters who keep our communities safe
- Learn about fire risk and safety to keep you and your whānau safe
- Meet our partner agencies
- Free admission



余家功夫 YEE GA MARTIAL ARTS MODERNIZING TRADITION

CLASSES ON NOW!

MARTIAL ARTS RIGHT IN YOUR OWN SCHOOL!

- Build Confidence
- Get Fit
- Learn Discipline & Respect
- Meet new people & become part of the family
- Learn a variety of techniques
 - Punching & Kicking
 - Takedowns
 - Self Defense

Parnell District School
48 Saint Stephens Avenue
Classes in the School Hall

Tuesdays & Thursdays
Children: 6:15pm - 7:15pm
Teenagers & Adults 6:15pm - 7:45pm

Minimum age: 7 years old

COME AND TRY A CLASS !

Contact:
Ryon
027 323 1097
yeeagamartialarts@gmail.com

PLAYING BASED MUSIC ACADEMY

Eliette's
MUSIC ACADEMY

Inspiring confidence &
creativity through music



SINGING
UKULELE
GUITARS
DRUMS

Private lesson - \$47

Group of 2 - \$26

Group of 3 to 4 - \$19.50

LESSONS ON SITE AT
PARNELL DISTRICT
SCHOOL

0212296767

grafton@eliettesmusicacademy.com

www.eliettesmusicacademy.com/pds-enrol

Sing • Act • Dance

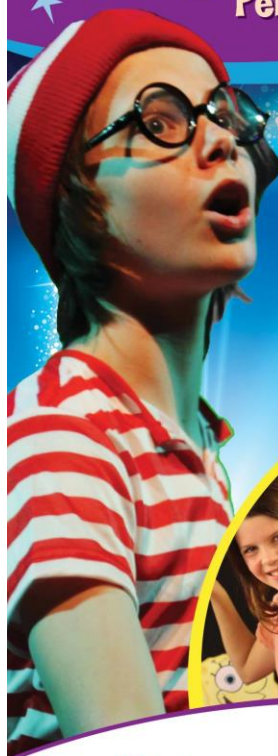
Perform in a Show!



Holiday Camps

We give Kids Confidence

Ages 5 to 13 years



Epsom Girls Grammar School

22 to 24 + 26 & 27 April (5 days)

Monday to Saturday (Minus ANZAC Day)

For full details and to BOOK online

www.kidsupfront.co.nz

kids
upfront
PERFORMING ARTS ACADEMY